

# Accelerate your Enterprise AI journey with OpenShift AI & Intel technology



**Stephan Gillich**

Director AI and Technical  
Computing GTM  
Intel Corporation



**Stefanie Chiras**

Senior Vice President  
Partner Ecosystem Success  
Red Hat

Innovation sponsor

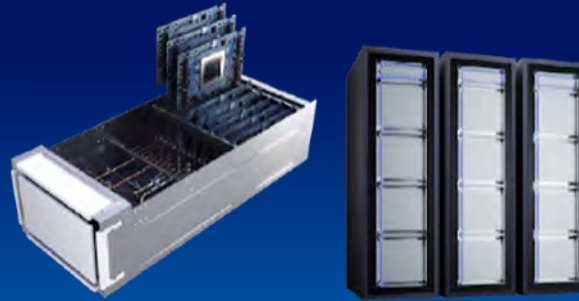


# Bringing AI EVERYWHERE



AI PC Node  
AI Developer Productivity &  
Light Inference

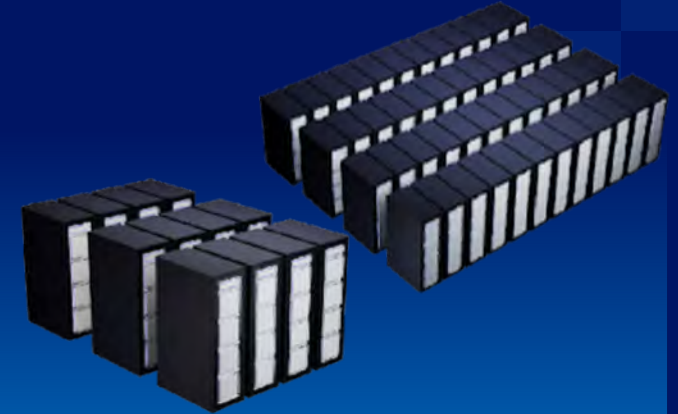
AI PC  
Broadest AI SW Ecosystem



Node  
Fine-tuning,  
Inference

Cluster  
Light Training, Tuning,  
Peak Inference

ENTERPRISE AI & EDGE AI  
Open Standard, "Ready to Use"



Super Cluster  
Training, Tuning,  
Peak Inference

Mega Cluster  
Large Scale Training  
& Inference

DATA CENTER AI  
AI Open, Scalable Systems & Reference Arch



# Intel Enterprise AI for Red Hat® OpenShift® AI and Red Hat® Enterprise Linux

Customer and Ecosystem Managed Software

Intel® Tiber™  
Edge Platform

 PyTorch

 OpenVINO™

Intel® Tiber™  
AI Studio

 **Red Hat**  
OpenShift AI

 **Red Hat**  
Ansible Automation  
Platform

 **Red Hat**  
OpenShift  
Container Platform

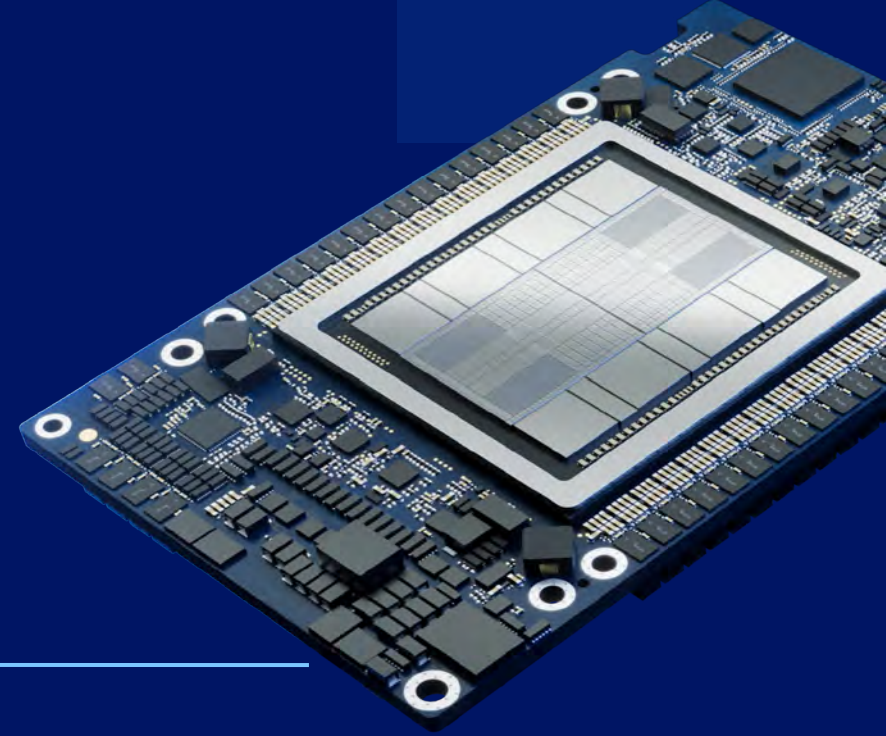
 **Red Hat**  
Enterprise Linux



# Intel® Gaudi® 3 AI Accelerator

Giant Leap in Performance  
and Productivity for AI Training & Inference

---



# Open Ecosystem to accelerate Enterprise GenAI Deployments

## RETRIEVAL AUGMENTED GENERATION (RAG)

Enterprise  
Data



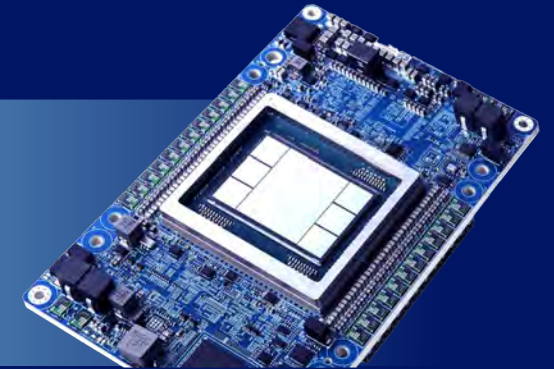
Mature, More Secure and Confidential

x86 CPU Based



Embedding  
And  
Vectorization

AI  
Models



Rapidly Evolving and Disruptive

Accelerator Based

# CONFIDENTIAL Computing & AI

## Now enabled with Red Hat\*



intel.  
XEON®

Intel® Trust Domain Extensions (Intel® TDX)

Extended to AI workloads and soon Gaudi3

---

## Intel® Tiber™ Trust Services

---

intel.

\*Guest support available from select CSPs. Host support coming soon

Come try: Preview access to Intel® Gaudi® 2 & 3\*  
Accelerators on Intel® Tiber™ Developer Cloud

Come visit: OPEA-based Retrieval Augmented Generation  
(RAG) on Intel® Gaudi with OpenShift AI tech session

intel®



Red Hat



Open Platform  
for Enterprise AI

Come by: Our booth for a Confidential Container demo

intel®

\*Intel® Gaudi® 3 Accelerators available in 2H'23